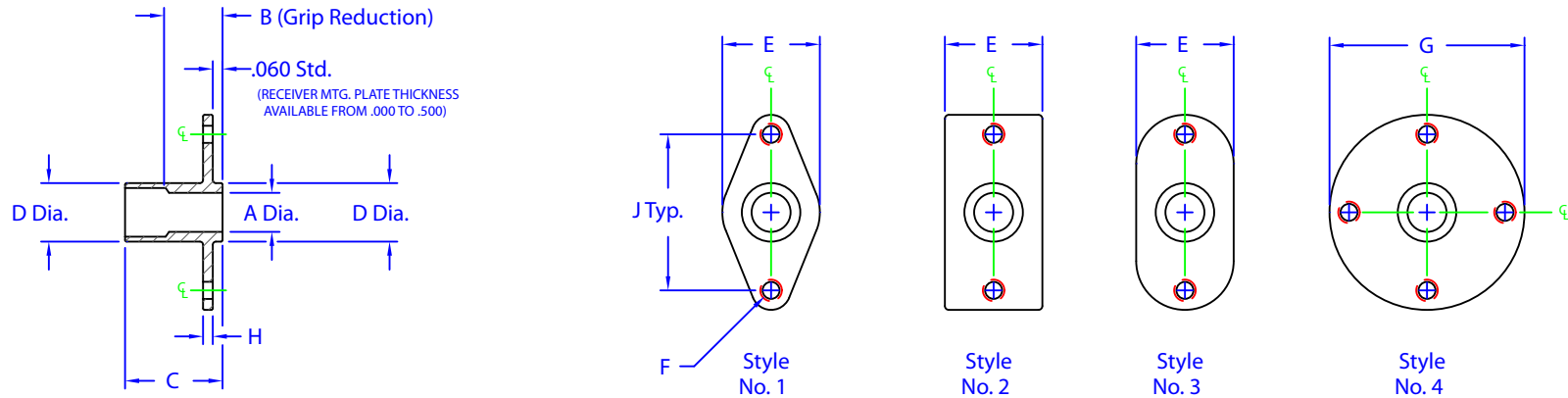


Rev	ECO#	Description of Change	By:
A	XXXX	Initial Drawing Release	Aanenson

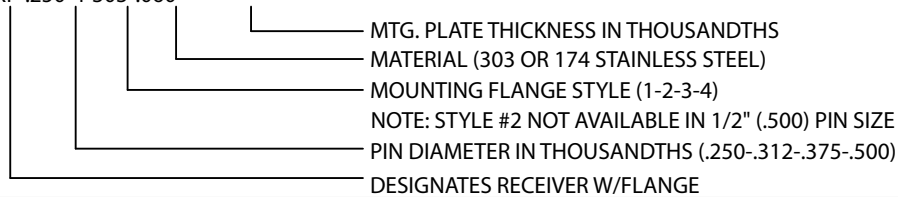


### MOUNTING FLANGE STYLES

RUN QTY.	PIN DIA.	A DIA. ±.001	B ±.010	C ±.010	D Dia. ±.005	E ±.010	F	G ±.010	H ±.005	J ±.010	RAW MAT.
	1/4" (.250)	.251	.375	.650	.375	.625	6-32 UNC-2B	1.250	.060	1.000	Ø1.250 (Style 2 = Ø1.375)
	5/16" (.312)	.313	.468	.783	.469	.625	6-32 UNC-2B	1.250	.060	1.000	Ø1.250 (Style 2 = Ø1.375)
	3/8" (.375)	.376	.562	.913	.562	.625	6-32 UNC-2B	1.250	.060	1.000	Ø1.250 (Style 2 = Ø1.375)
	1/2" (.500)	.501	.750	1.195	.750	.875	10-32 UNF-2B	1.500	.100	1.125	Ø1.500 (All Flange Styles)

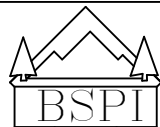
### SAMPLE ORDER CALLOUT

RXF-.250-4-303-.060



Unless otherwise specified:  
Dimensions apply AFTER  
plating and dimensions are  
in inches.

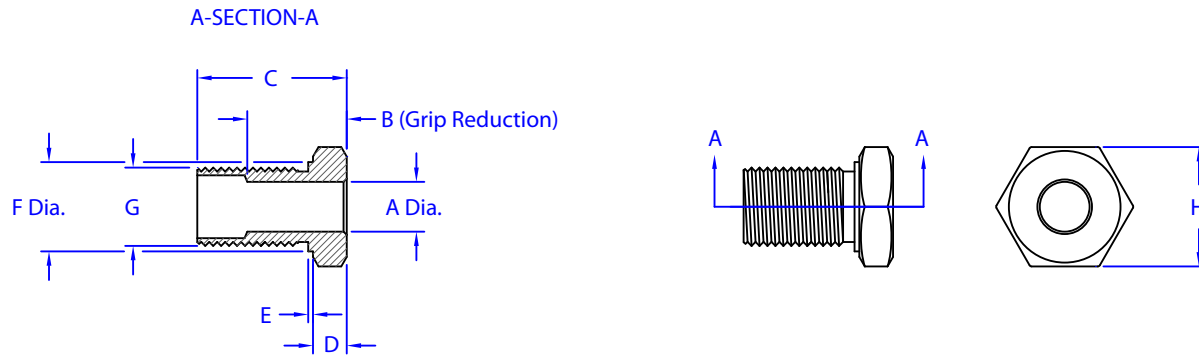
Tolerances:  
0.x = ±0.03  
0.xx = ±0.01  
0.xxx = ±0.005  
0.xxxx = ±0.0002  
Angles: = ±0.5°  
Int. Radii = .02 Max.



Big Sky  
Precision,  
Incorporated

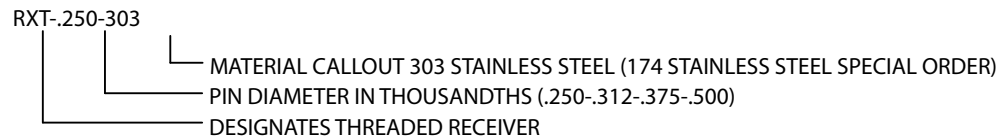
Desc: <b>Sky-Loc Flange Mount Receivers</b>				Pn: <b>X</b>		Cust. Rev: <b>A</b>	
Matl: <b>See Sample Order Callout</b>				Finish: <b>Passivate</b>			
File Name: <b>RecMatrix.dwg</b>			Drawn/Date <b>RLA-10/17/01</b>		Revised/Date		
Dwg Scale <b>1=1</b>	Plot Scale <b>1=1</b>	Doc. Rev. <b>A</b>	Apv'd/Date			Sheet: <b>1/1</b>	

Rev	ECO#	Description of Change	By:
A	XXXX	Initial Drawing Release	Aanenson



RUN QTY.	PIN DIA.	A DIA. ±.001	B ±.010	C ±.005	D ±.005	E ±.005	F Dia. ±.002	G	H	RAW MAT.
	1/4" (.250)	.251	.500	.775	.150	.030	.498	7/16-20 UNF-2A	5/8"	Ø.750
	5/16" (.312)	.313	.625	.939	.212	.030	.561	1/2-20 UNF-2A	3/4"	Ø.875
	3/8" (.375)	.376	.750	1.100	.275	.030	.685	5/8-18 UNF-2A	15/16"	Ø1.125
	1/2" (.500)	.501	1.000	1.445	.322	.030	.873	3/4-16 UNF-2A	1-1/8"	Ø1.375

### SAMPLE ORDER CALLOUT



Unless otherwise specified:  
Dimensions apply AFTER  
plating and dimensions are  
in inches.

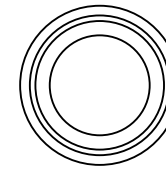
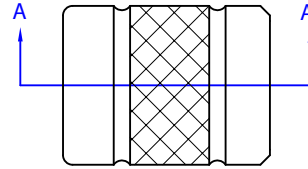
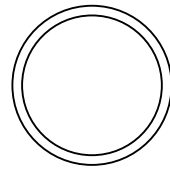
Tolerances:  
0.x = ±0.03  
0.xx = ±0.01  
0.xxx = ±0.005  
0.xxxx = ±0.0002  
Angles: = ±0.5°  
Int. Radii = .02 Max.



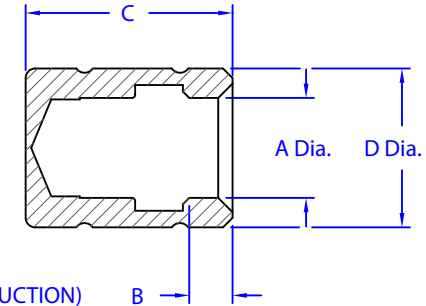
**Big Sky  
Precision,  
Incorporated**

Desc: <b>Sky-Loc Threaded Receivers</b>		Pn: <b>X</b>	Cust. Rev: <b>A</b>
Matl: <b>See Sample Order Callout</b>		Finish: <b>Passivate</b>	
File Name: <b>HexRecMatrix.dwg</b>		Drawn/Date <b>RLA-10/23/01</b>	Revised/Date
Dwg Scale <b>1=1</b>	Plot Scale <b>1=1</b>	Doc. Rev. <b>A</b>	Apv'd/Date
			Sheet: <b>1/1</b>

Rev	ECO#	Description of Change	By:
A	XXXX	Initial Drawing Release	Aanenson



A-SECTION-A

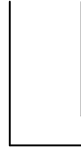


(GRIP REDUCTION)

Run Qty.	PIN DIA.	A Dia. ±.003	B ±.010	C ±.010	D Dia. ±.010	Raw Mat.
	1/4" (.250)	.253	.125	.580	.375	
	5/16" (.312)	.315	.156	.650	.469	
	3/8" (.375)	.378	.187	.730	.562	
	1/2" (.500)	.503	.250	1.000	.750	
	5/8" (.625)	.628	.312	1.300	1.000	

**SAMPLE ORDER CALLOUT**

RXC-.250



PIN DIAMETER IN THOUSANDTHS (.250-.312-.375-.500-.625)  
DESIGNATES RECEIVER CAP

Unless otherwise specified:  
Dimensions apply AFTER  
plating and dimensions are  
in inches.

**Tolerances:**

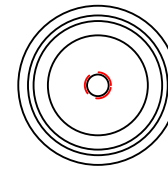
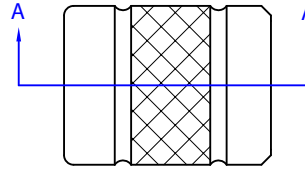
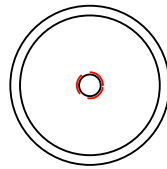
- 0.x = ±0.03
- 0.xx = ±0.01
- 0.xxx = ±0.005
- 0.xxxx = ±0.0002
- Angles: = ±0.5°
- Int. Radii = .02 Max.



**Big Sky  
Precision,  
Incorporated**

Desc: <b>Sky-Loc Receiver Caps, W/O Lanyard</b>		Pn: <b>X</b>	Cust. Rev: <b>A</b>
Matl: <b>Type 303 Stainless Steel</b>		Finish: <b>Passivate</b>	
File Name: <b>CapMatrix.dwg</b>		Drawn/Date <b>RLA-10/19/01</b>	Revised/Date
Dwg Scale <b>1=1</b>	Plot Scale <b>1=1</b>	Doc. Rev. <b>A</b>	Apv'd/Date
			Sheet: <b>1/1</b>

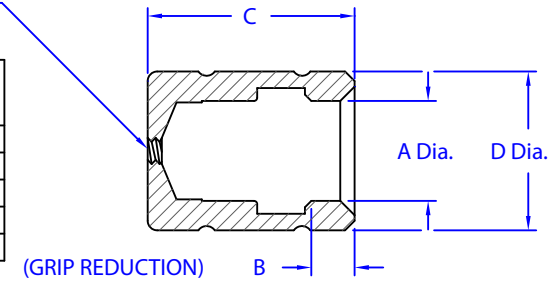
Rev	ECO#	Description of Change	By:
A	XXXX	Initial Drawing Release	Aanenson



8-32 UNC-2B Typ

Run Qty.	PIN DIA.	A Dia. ±.003	B ±.010	C ±.010	D Dia. ±.010	Raw Mat.
	1/4" (.250)	.253	.125	.580	.375	
	5/16" (.312)	.315	.156	.650	.469	
	3/8" (.375)	.378	.187	.730	.562	
	1/2" (.500)	.503	.250	1.000	.750	
	5/8" (.625)	.628	.312	1.300	1.000	

A-SECTION-A



**SAMPLE ORDER CALLOUT**

RXCT-.250

PIN DIAMETER IN THOUSANDTHS (.250-.312-.375-.500-.625)  
DESIGNATES RECEIVER CAP THREADED

Unless otherwise specified:  
Dimensions apply AFTER  
plating and dimensions are  
in inches.

**Tolerances:**

- 0.x = ±0.03
- 0.xx = ±0.01
- 0.xxx = ±0.005
- 0.xxxx = ±0.0002
- Angles: = ±0.5°
- Int. Radii = .02 Max.

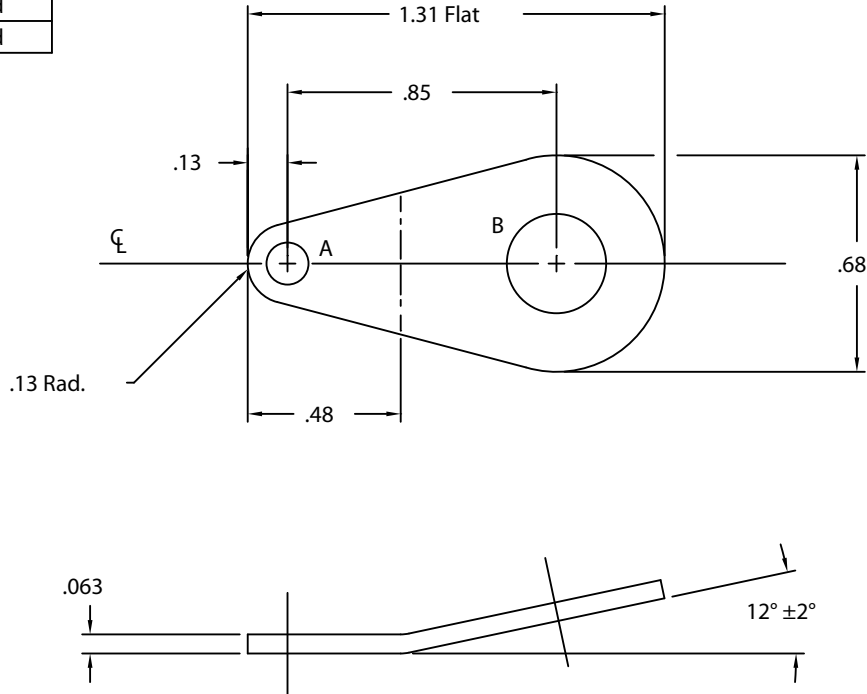


**Big Sky  
Precision,  
Incorporated**

Desc: <b>Sky-Loc Receiver Caps W/Lanyard</b>		Pn: <b>X</b>	Cust. Rev: <b>A</b>
Matl: <b>Type 303 Stainless Steel</b>		Finish: <b>Passivate</b>	
File Name: <b>CapMatrix.dwg</b>		Drawn/Date <b>RLA-10/18/01</b>	Revised/Date
Dwg Scale <b>1=1</b>	Plot Scale <b>1=1</b>	Doc. Rev. <b>A</b>	Apv'd/Date
			Sheet: <b>1/1</b>

Hole size A	Hole size B	BSP part #	Finish
Ø.130	Ø.312	BSP-060	Tumbled
Ø.175	Ø.312	BSP-1372	Tumbled
Ø.175	Ø.312	BSP-1373	Black Oxide
Ø.130	Ø.194	BSP-1396	Tumbled
Ø.130	Ø.130	BSP-1397	Tumbled
Ø.130	Ø.500	BSP-1525	Tumbled
Ø.130	Ø.281	BSP-1526	Tumbled
Ø.130	Ø.438	BSP-1527	Tumbled

Rev	ECO#	Description of Change	By:
A	XXXX	Initial Drawing Release	Weidner



Note 1: Finish is as punched with bend to BSPI. BSPI will tumble deburr in-house.

Unless otherwise specified:  
Dimensions apply AFTER  
plating and dimensions are  
in inches.

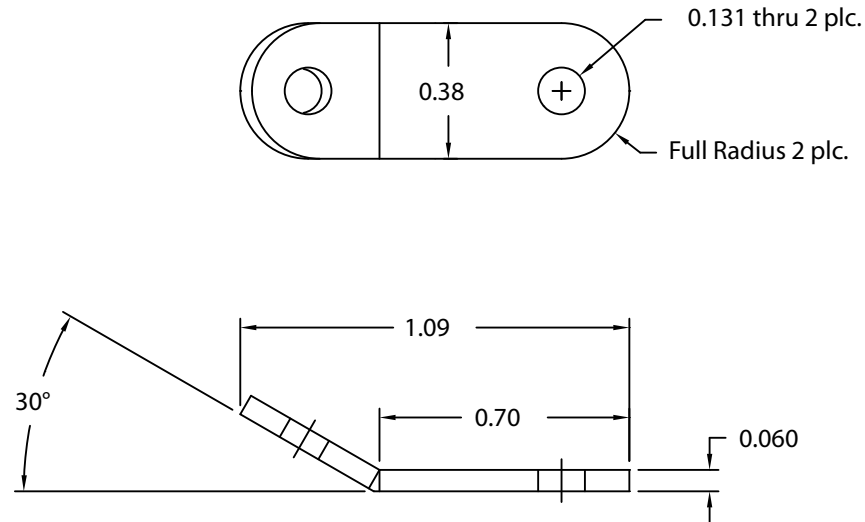
Tolerances:  
0.x = ±0.03  
0.xx = ±0.01  
0.xxx = ±0.005  
0.xxxx = ±0.0002  
Angles: = ±0.5°



Big Sky  
Precision,  
Incorporated

Desc: <b>Tab, Lanyard, Tear-drop shape</b>		Pn: <b>Tab Matrix</b>	Cust. Rev: -
Matl: <b>.063 Thick Type 304 Stainless Steel</b>		Finish: <b>BSPI To Tumble Deburr</b>	
File Name: <b>Tab Matrix.dwg</b>		Drawn/Date <b>SMW-2/17/11</b>	Revised/Date
Dwg Scale <b>1=1</b>	Plot Scale <b>2=1</b>	BSP Rev: <b>A</b>	Apv'd/Date
			Sheet: <b>1/1</b>

Rev	ECO#	Description of Change	By:
A	XXXX	Initial Drawing Release	Weidner
B	XXXX	Renamed from SK002077	Weidner
C	XXXX	Changed Ø.125 to Ø.131	Weidner



Unless otherwise specified:  
Dimensions apply AFTER  
plating and dimensions are  
in inches.

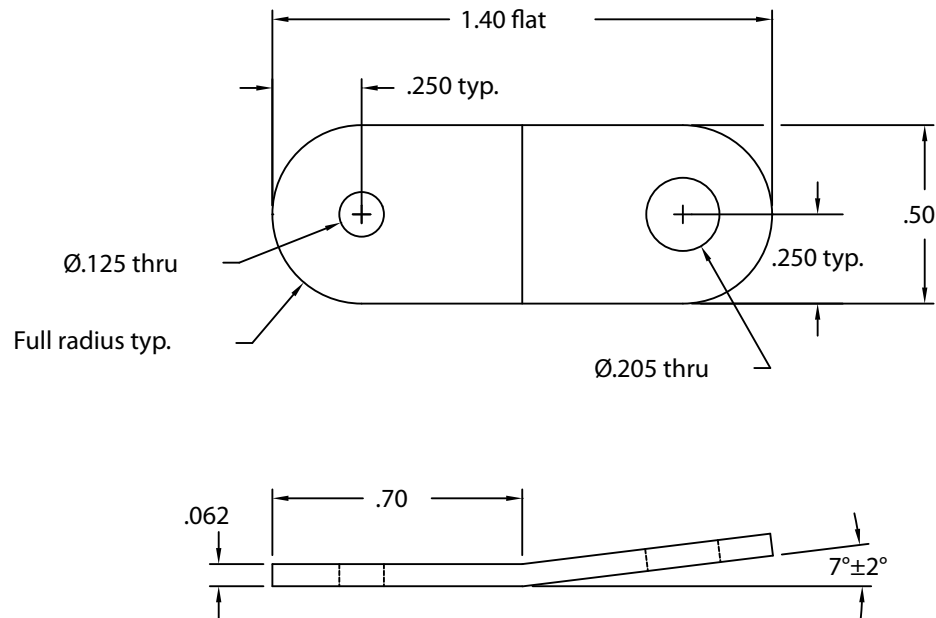
Tolerances:  
0.x = ±0.03  
0.xx = ±0.01  
0.xxx = ±0.005  
0.xxxx = ±0.0002  
Angles: = ±1°



Big Sky  
Precision,  
Incorporated

Desc: <b>Tab, Lanyard</b>		Pn: <b>BSP-1352</b>	Cust. Rev: <b>1</b>
Matl: <b>BSP-1351</b>		Finish: <b>Black Anodize</b>	
File Name: <b>BSP-1352.dwg</b>		Drawn/Date <b>SMW-1/18/07</b>	Revised/Date <b>SMW-1/23/08</b>
Dwg Scale <b>1=1</b>	Plot Scale <b>3=1</b>	BSP Rev: <b>C</b>	Apv'd/Date <b></b>
			Sheet: <b>1/1</b>

Rev	ECO#	Description of Change	By:
A	XXXX	Initial Drawing Release	Weidner



Note 1: Finish is as punched with bend to BSPI. BSPI will tumble deburr in-house.

Unless otherwise specified:  
Dimensions apply AFTER  
plating and dimensions are  
in inches.

Tolerances:  
0.x = ±0.03  
0.xx = ±0.01  
0.xxx = ±0.005  
0.xxxx = ±0.0002  
Angles: = ±0.5°



Big Sky  
Precision,  
Incorporated

Desc: <b>Tab, Lanyard, 79-98</b>		Pn: <b>79-98</b>	Cust. Rev: <b>F</b>
Matl: <b>.063 Thick Type 304 Stainless Steel</b>		Finish: <b>BSPI To Tumble Deburr</b>	
File Name: <b>79-98.dwg</b>		Drawn/Date <b>SMW-12/19/06</b>	Revised/Date
Dwg Scale <b>1=1</b>	Plot Scale <b>3=1</b>	BSP Rev: <b>A</b>	Apv'd/Date
Sheet: <b>1/1</b>			